



E2A Long-Range Proximity Sensor



Summer Splash!

Try select **E2A sensors** in your water washdown application and **soak up the savings.**

- » Reduce replacement frequency
- » Improve signal reliability
- » Spend less on hardware
- » Increase machine uptime

Contact your local distributor for pricing on these select models.

Designed for OEM Applications.

Resists Water Washdown

- » IP67 and IP69K enclosure ratings suitable for high-pressure water washdown as required in some food & beverage / pharmaceutical applications.

Safe Mounting with Greater Sensing Distance

- » 1.5 to 2 times longer standard sensing ranges.

Flush Mountable

- » M8 and M12 shielded versions allow flush mounting, M18 version allows flush mounting with the clearance from the nuts provided.

360° viewing of Yellow Indicator

- » Multiple windows around the barrel allow for 360° viewing of yellow indicator ideal for the North American and European markets.

Built-In Protection

- » Power Supply and Output reverse polarity protection, surge suppressor and short circuit protection (M8, has no output reverse polarity protection).

Work with a leading supplier

Omron is a leading supplier of Proximity Sensors and industrial automation controls that improve the quality of everything you manufacture. OEM's have come to trust Omron's proven quality and innovation. Our first solid state proximity switch was developed in 1960 and continuous advances enable them to perform reliably in harsh environments. Let Omron help you with your automation challenges.

For more information contact:

OMRON CANADA, INC. HEAD OFFICE

Toronto, ON, Canada

1.866.986.6766

www.omron.ca

Omron Distributor:

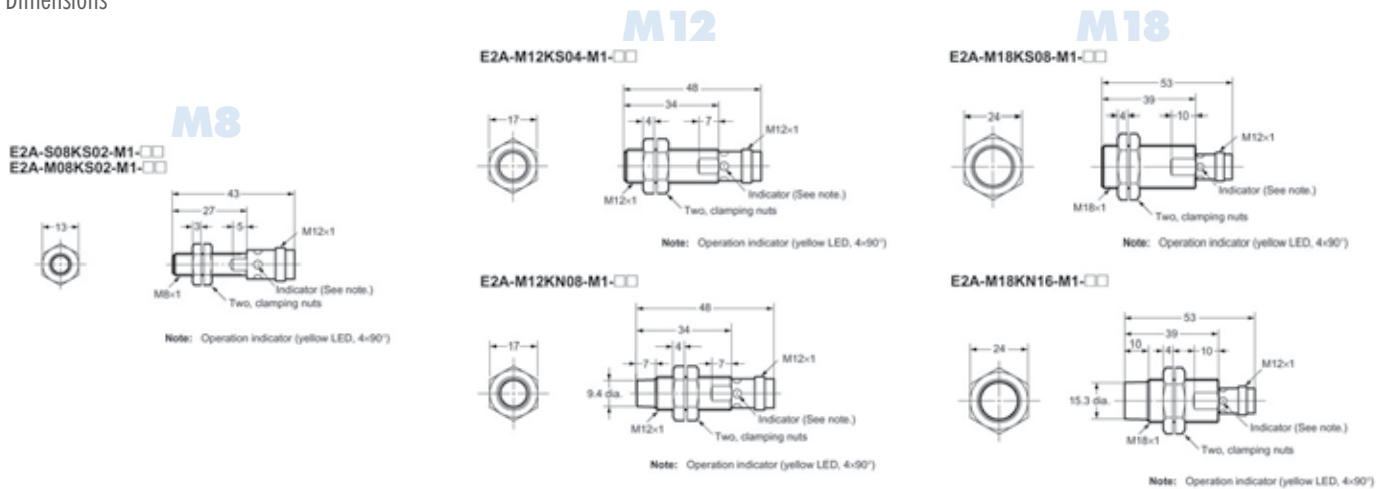
E2A Proximity Sensor

Specifications

Ratings and Characteristics

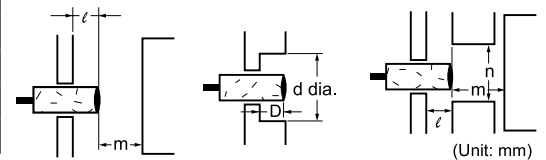
		M8		M12		M18	
		Shielded		Shielded		Unshielded	
Model Number	PNP Normally Open	E2A-S08KS02-M1-B1	E2A-M12KS04-M1-B1	E2A-M12KN08-M1-B1	E2A-M18KS08-M1-B1	E2A-M18KN16-M1-B1	
	NPN Normally Open.	E2A-S08KS02-M1-C1	E2A-M12KS04-M1-C1	E2A-M12KN08-M1-C1	E2A-M18KS08-M1-C1	E2A-M18KN16-M1-C1	
Sensing Distance (+/- 10%)		2mm		4mm		8mm	
Setting Distance		0 to 1.6mm		0 to 3.2mm		0 to 6.4mm	
Differential Travel		10% max. of sensing distance					
Target		Ferrous Metal (sensing distance decreases with non-ferrous metals)					
Standard Target (Mild Steel ST37)		8x8x1mm		12x12x1mm		24x24x1mm	
Response Frequency		1.5kHz		1kHz		800Hz	
Power Supply (Operating Range)		12 to 24 VDC, Ripple 10% max. (10 to 32 VDC)					
Current Consumption		10 mA max.					
Control Output	Load Current	200 mA max. (32VDC max.); 100 mA max. @ -40C to-25C					
	Residual Voltage	2 V max. (under 200 mA load with 2m cable length)					
Indicator		360 degree viewing operation indicator (Yellow LED), 4 holes					
Output Type		Open Collector Transistor					
Protection Circuit		Power supply reverse polarity protection, surge suppressor, short-circuit protection		Output reverse polarity protection, power supply reverse polarity protection, surge suppressor, short-circuit protection			
Operating Temperature		-40C to 70C					
Temperature Influence		+/-10% max. of sensing distance @23C within range of -25C to 70C			+/-15% max. of sensing distance @23C within range of -40C to 70C		
Voltage Influence		+/-1% max. of sensing distance within rated voltage range +/-15%					
Material	Case	Stainless Steel		Nickel-plated Brass			
	Sensing Surface	PBT					
Weight	M12 connector version	20g		35g		70g	

Dimensions



Effects of Surrounding Metal

Type	Shielded					Non-Shielded				
	ℓ	m	d	D	n	ℓ	m	d	D	n
M8	0	4.5	-	0	12	12	8	24	12	24
M12	0	12	-	0	18	15	20	40	15	40
M30	0 (See note 1).	24	27	1	27	22	48	70	22	70



Note 1: In the case of using the supplied nuts. If true flush mounting is necessary, apply a free zone 1.5mm.